

Sample Name: 1060418-2021-TF-15-CRD-01  
 Method:  
 Matrix: Extracts and Concentrates  
 Sample Type: Broad Spectrum Distillate

**Cannabinoids by HPLD-DAD**

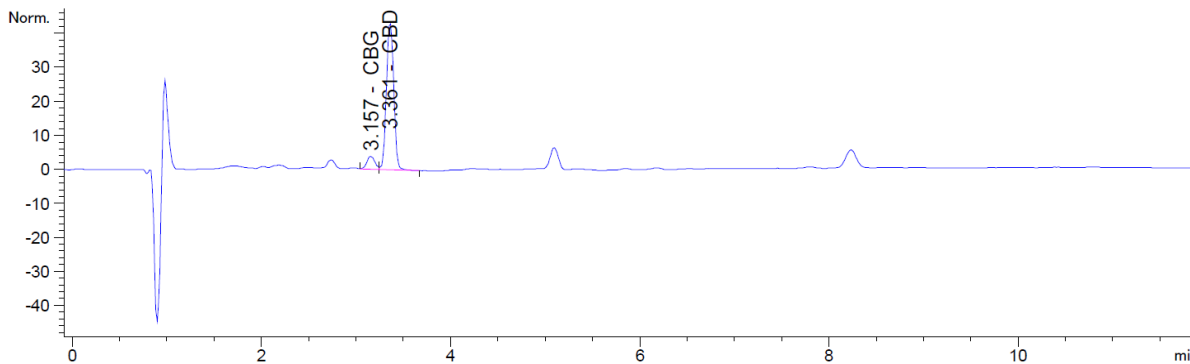
<b>Total CBD %</b>	<b>Total THC %</b>	<b>Total CBG %</b>	<small>Total THC = THCA * 0.877 + D9-THC</small>
46.36	0.00	4.66	<small>Total CBD = CBDA * 0.877 + CBD</small>
			<small>Total CBG = CBGA * 0.878 + CBG</small>

**Results**

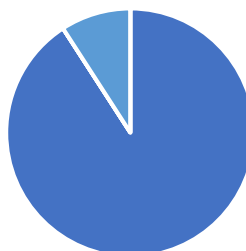
Analyte	LOQ %	Results %	Results mg/g
CBD	0.01	46.36	463.60
CBDA	0.01	0.00	0.00
THC	0.01	0.00	0.00
THCA	0.01	0.00	0.00
CBG	0.01	4.66	46.60
CBGA	0.01	0.00	0.00

**Chromatogram**

DAD1 D, Sig=228,16 Ref=360,100 (PP\_081821\PP081821 2021-10-26 12-28-35\021-0301.D)



% = w/v = Percent (Weight of analyte / Volume of Product)



■ CBD ■ CBDA ■ THC ■ THCA ■ CBG ■ CBGA